



ORIGINAL INSTRUCTIONS
Grinder Sander

RBGL650G



N197



Important!

It is essential that you read the instructions in this manual before operating this machine.

Subject to technical modifications.



GENERAL SAFETY WARNINGS

⚠ WARNING

When using electric tools, basic safety precautions should always be followed to reduce the risk of fire, electric shock and personal injury. Read all these instructions before attempting to operate this product and save these instructions.

- **Keep work area clear.** Cluttered areas and benches invite injuries.
 - **Consider work area environment.** Do not expose tools to rain. Do not use tools in damp or wet locations. Keep work area well lit. Do not use tools in the presence of flammable liquids or gases.
 - **Guard against electric shock.** Avoid body contact with earthed or grounded surfaces (e.g., pipes, radiators, ranges, refrigerators).
 - **Keep other persons away.** Do not let persons, especially children, be involved in the work, touch the tool or the extension cord, and keep them away from the work area.
 - **Store idle tools.** When not in use, tools should be stored in a dry locked-up place, out of reach of children.
 - **Do not force the tool.** It will do the job better and safer at the rate for which it was intended.
 - **Use the right tool.** Do not force small tools to do the job of a heavy duty tool. Do not use tools for purposes not intended, for example, do not use circular saws to cut tree limbs or logs.
 - **Dress properly.** Do not wear loose clothing or jewellery, they can be caught in moving parts. Non-skid footwear is recommended when working outdoors. Wear protective hair covering to contain long hair.
 - **Use protective equipment.** Use safety glasses. Use face or dust mask if working operations create dust.
 - **Connect dust extraction equipment.** If the tool is provided for the connection of dust extraction and collecting equipment, ensure these are connected and properly used.
 - **Do not abuse the cord.** Never yank the cord to disconnect it from the socket. Keep the cord away from heat, oil and sharp edges.
 - **Secure work.** Where possible, use clamps or a vice to hold the work. It is safer than using your hand.
 - **Do not overreach.** Keep proper footing and balance at all times.
 - **Maintain tools with care.** Keep cutting tools sharp and clean for better and safer performance. Follow instruction for lubricating and changing accessories. Inspect tool cords periodically and if damaged, have them repaired by an authorized service facility. Inspect extension cords periodically and replace if damaged. Keep handles dry, clean and free from oil and grease.
- **Disconnect tools.** When not in use, before servicing and when changing accessories such as blades, bits and cutters, disconnect tools from the power supply.
 - **Remove adjusting keys and wrenches.** Form the habit of checking to see that keys and adjusting wrenches are removed from the tool before turning it on.
 - **Avoid unintentional starting.** Ensure switch is in "off" position when plugging in.
 - **Use outdoor extension leads.** When the tool is used outdoors, use only extension cords intended for outdoor use and so marked.
 - **Stay alert.** Watch what you are doing, use common sense and do not operate the tool when you are tired, under the influence of any drugs, alcohol, or medication that could affect your ability to use the tool properly.
 - **Check damaged parts.** Before further use of tool, it should be carefully checked to determine that it will operate properly and perform its intended function. Check for alignment of moving parts, binding of moving parts, breakage of parts, mounting and any other conditions that may affect its operation. A guard or other part that is damaged should be properly repaired or replaced by an authorized service centre unless otherwise indicated in this instruction manual. Have defective switches replaced by an authorized service centre. Do not use the tool if the switch does not turn it on and off.
 - **Warning.** The use of any accessory or attachment other than the one recommended in this instruction manual may present a risk of personal injury.
 - **Have your tool repaired by a qualified person.** This electric tool complies with the relevant safety rules. Repairs should only be carried out by qualified persons using original spare parts otherwise this may result in considerable danger to the user.

SPECIAL SAFETY RULES

⚠ WARNING

The product is not intended for use by persons (including children) with reduced physical, sensory or mental capabilities, or lack of experience and knowledge, unless they have been given supervision or instruction concerning use of the product by a person responsible for their safety.

Children should be supervised to ensure that they do not play with the product.

- The plug must be plugged into a matching outlet that is properly installed and grounded in accordance with all local codes and ordinances. If you are not sure, have a certified electrician check the receptacle.
- Mount the grinder sander firmly to the workbench, grinding stand or other rigid frame before operation. An unsecured grinder sander is unstable and will move



during operation. This may result in damage or injury.

- Prior to operation, inspect the components and any accessories of the grinder sander to ensure there are no conditions that may affect proper operation. Tighten grinding wheel lock nuts, securing bolts and all clamps and guards.
- Prior to each start up, inspect the grinding wheel for damage. Do not use damaged or unshaped wheels. Replace any damaged grinding wheel according to the instructions.
- Check that the wheel rotates freely prior to each start up. With the grinder sander unplugged and the switch turned to OFF, carefully spin the wheel by hand. The wheel should not contact any components of the grinder sander, and there should be no binding or other conditions that may affect proper operation.
- During each start-up, stand to one side of the grinder and switch it ON. Let the grinder operate at full speed for one minute so that any undetected flaws or cracks of the wheel will become apparent. Do not contact the wheel with the work piece until the grinder sander has reached full speed.
- Secure work. Use clamps or a vise to hold the work when practical. It is safer than using your hand and it frees both hands to operate the tool.
- Keep hands and body parts clear of grinding wheels. Contacting the rotating wheel may cause injury.
- Always use guards and eye shields. Keep all guards in place and in working order. Operating the grinder sander without guards or with damaged guards may result in injury.
- Avoid burns. Grinding may cause items and the grinding wheel to become hot. Do not touch the grinding wheel or items that may be hot.
- Do not use the grinder to work on small items or items which cannot be held properly. The item may be thrown and result in injury.
- Never grind on the side of the wheel. The wheel will shatter. Grind on the face of the wheel only.
- Never leave a running tool unattended. Turn the power switch to OFF. The grinding wheels continue to rotate after the tool is switched off. Do not leave the tool until it has come to a complete stop.
- Never reach behind or beneath the grinding wheels.
- Use ear protection, such as plugs or muffs, during extended periods of operation.
- The vibration emission during actual use of power tool can differ from the declared total value depending on the ways in which the tool is used. Operators need to identify safety measures to protect themselves based on an estimation of exposure in the actual conditions of use.
- Remove the plug before carrying out any adjustment, servicing or maintenance. The power cord must remain unplugged whenever you are maintaining your grinder sander.

- Adjust tool rests whenever necessary to keep the distance between the work rests and the grinding wheels as small as possible. This distance shall be less than or equal to 2 mm in any case. As the diameter of the grinding wheel decreases with use, maintain the maximum tool rest distance by adjusting it.
- Adjust spark arrestors whenever necessary to keep the distance between the work rests and the grinding wheels as small as possible. This distance shall be less than or equal to 2 mm in any case. As the diameter of the grinding wheel decreases with use, maintain the maximum spark arrestor distance by adjusting it.
- Replace grinding wheel when its diameter wear value is more than 8mm.
- Replace work rest when its thickness wear value is more than 0.5 mm.
- When fitting a new grinding wheel, always check that the stated maximum RPM meets or exceeds that stated on the grinder. Ensure the wheel diameter and arbor size meet that stated on the specifications. Also check the new wheel for damage, such as flaws or cracks.

INTENDED USE

- This grinder sander is ideal for use in sharpening chisels, axes and other wood-cutting tools. It is also useful for repairing tips on screwdrivers and drill bits or for removing excess metal burrs from pieces of cut metal.
- With the proper accessories, this tool can be used for cleaning metal surfaces using a wire brush or for buffing and polishing using a cloth wheel.
- Never use this grinder sander for cut-off operations.

ENVIRONMENTAL PROTECTION



Recycle raw materials instead of disposing of as waste. The machine, accessories and packaging should be sorted for environmental-friendly recycling.

SYMBOL



Safety alert

V Volts

Hz Hertz

~ Alternating current

W Watts



no No-load speed

min⁻¹ Revolutions or reciprocations per minute

 CE conformity



Please read the instructions carefully before starting the machine.



Wear ear protection



Wear eye protection



Danger! Sharp blade.



Waste electrical products should not be disposed of with household waste. Please recycle where facilities exist. Check with your Local Authority or retailer for recycling advice.



Unplug

ICONS IN THIS MANUAL



Unpacking



Getting started



Safety



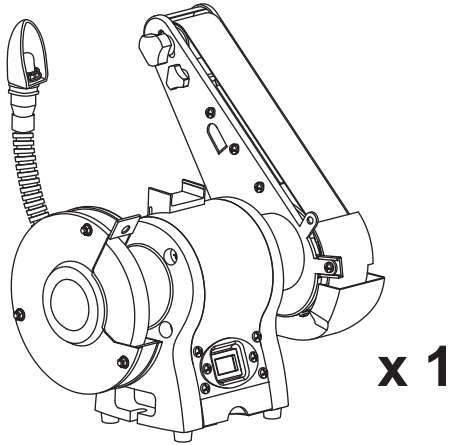
Maintenance

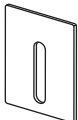



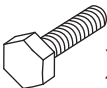



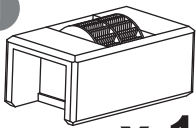

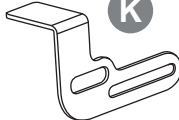



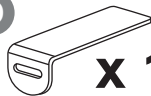
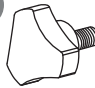




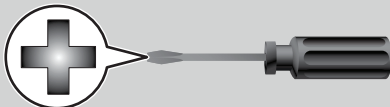
Safety alert



Plug in

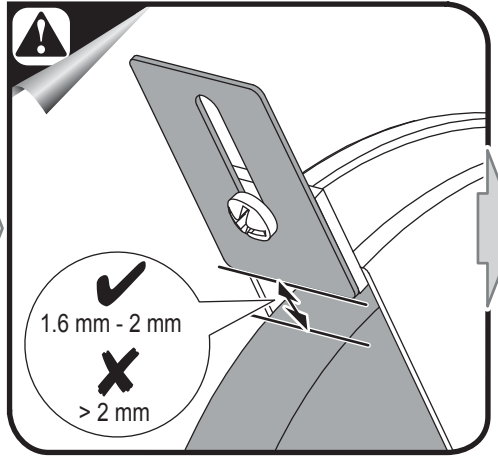
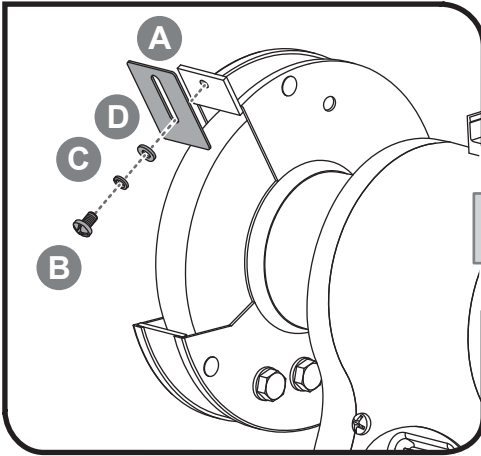


- A**  **x 1**
- B**  **x 1**
- C**  **x 1**
- D**  **x 1**
- E**  **x 1**
- F**  **x 1**
- G**  **x 1**
- H**  **x 1**
- I**  **x 1**
- J**  **x 1**
- K**  **x 1**
- L**  **x 2**
- M**  **x 2**
- N**  **x 1**
- O**  **x 1**
- P**  **x 1**
- Q**  **x 1**
- R**  **x 1**

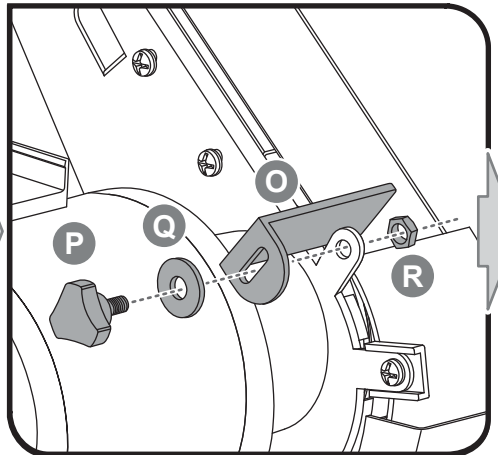
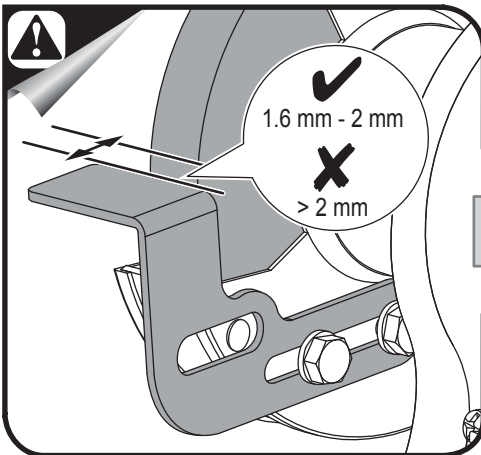




1

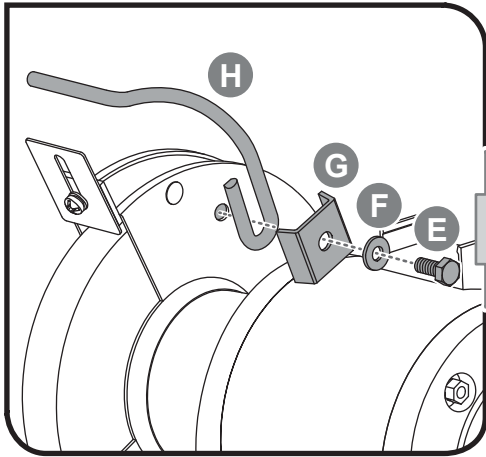


5

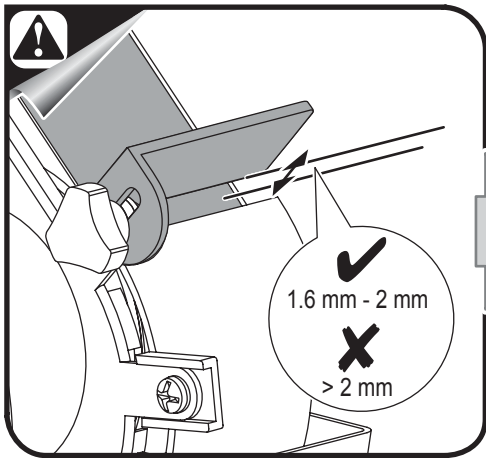
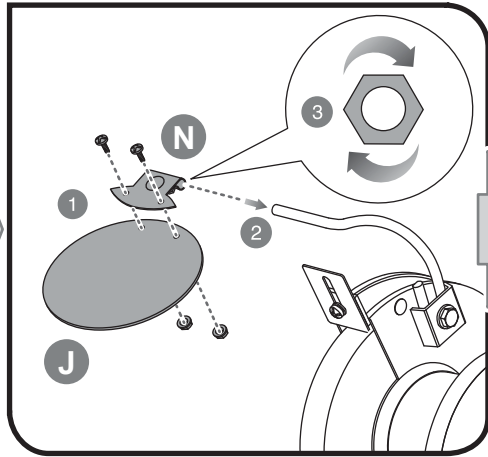




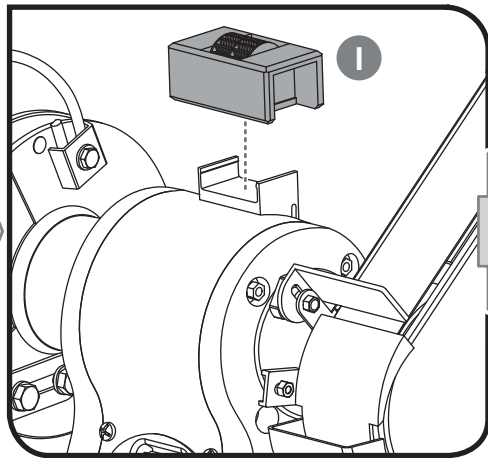
2



3

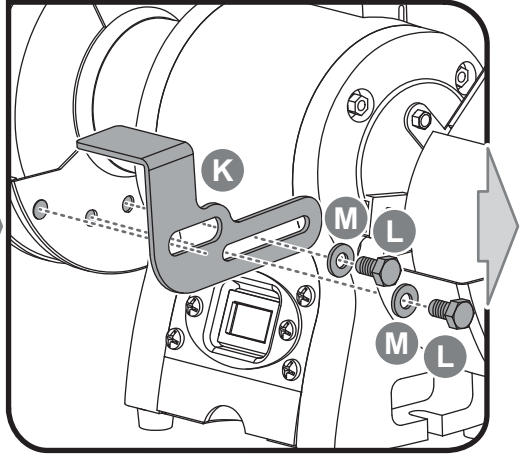
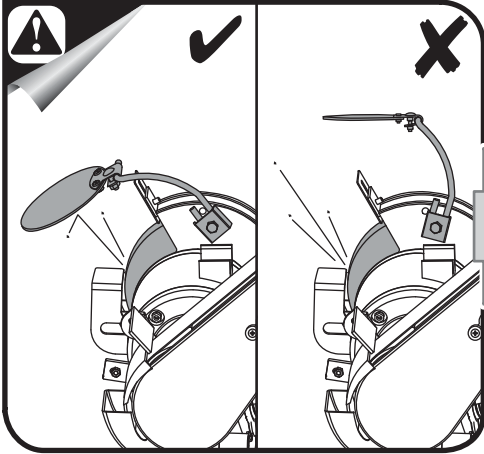


6

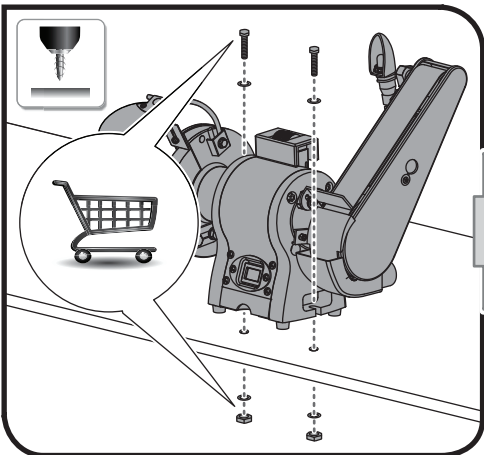




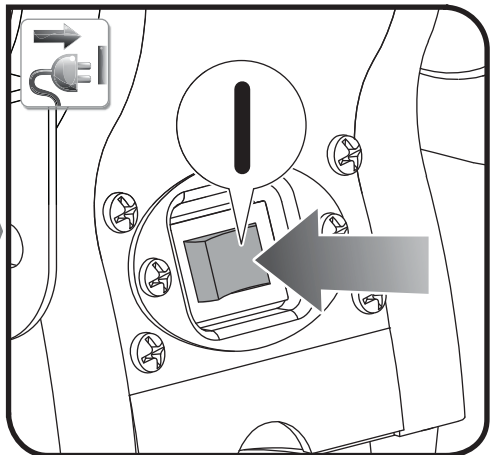
4

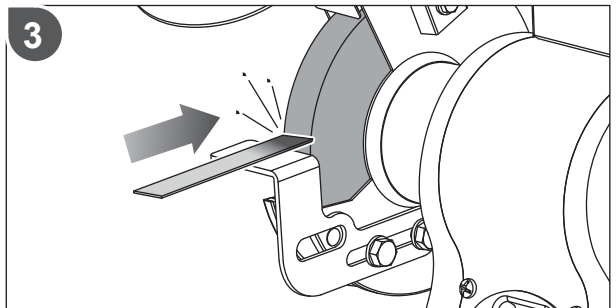
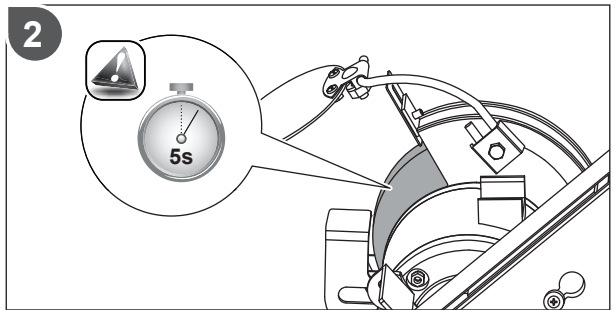
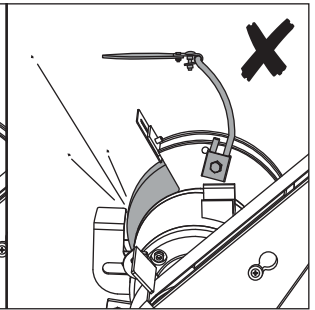
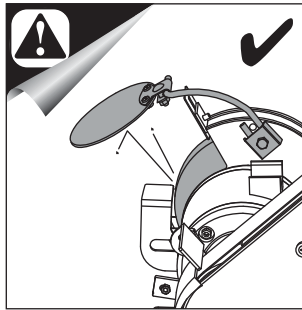
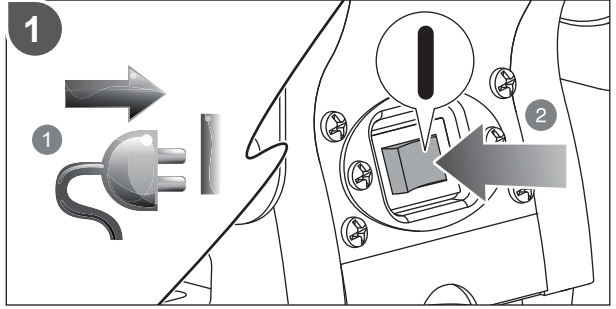
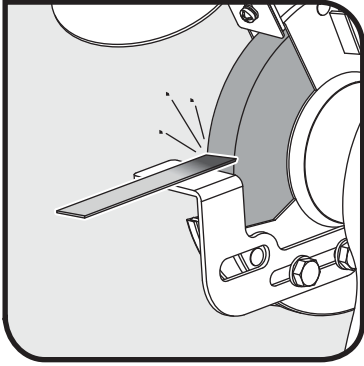


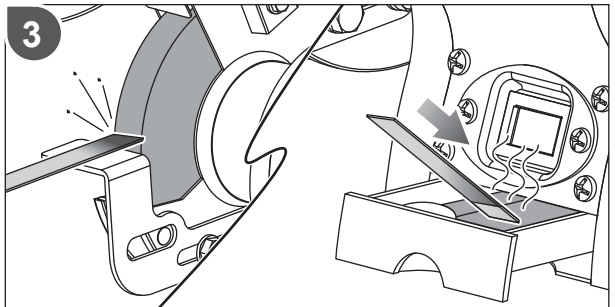
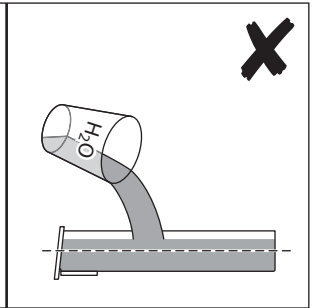
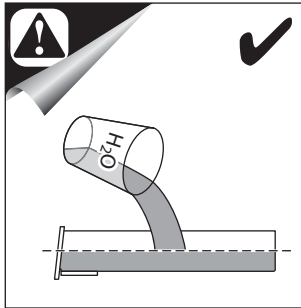
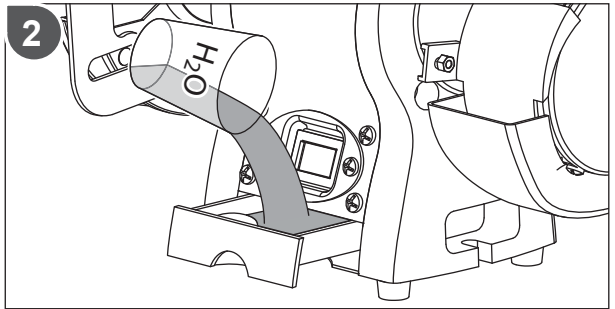
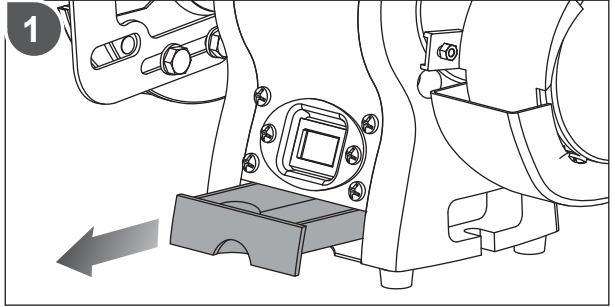
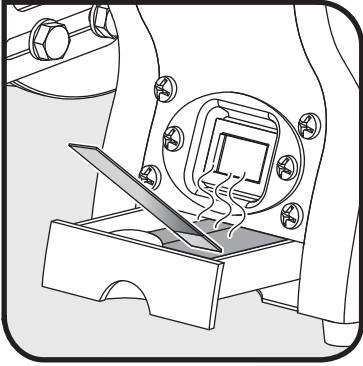
7

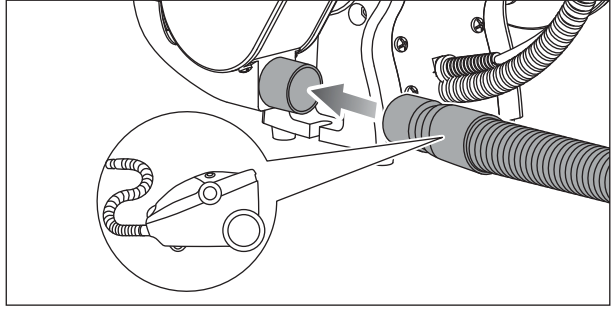
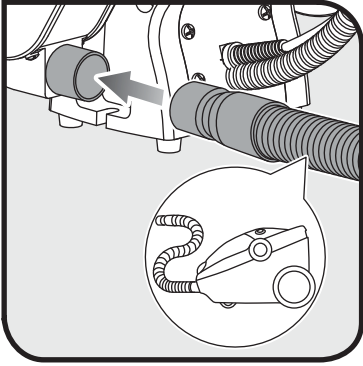


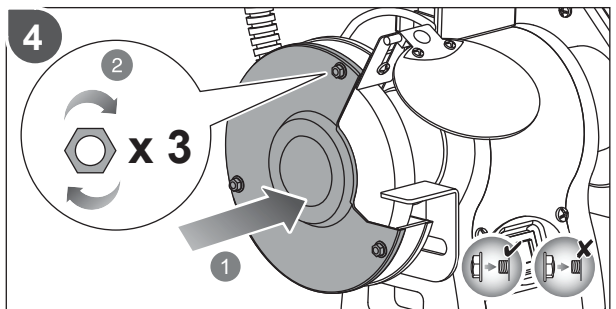
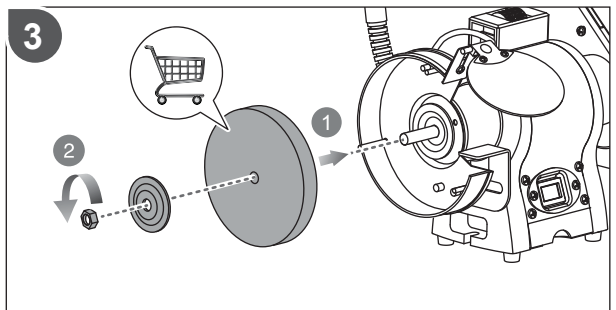
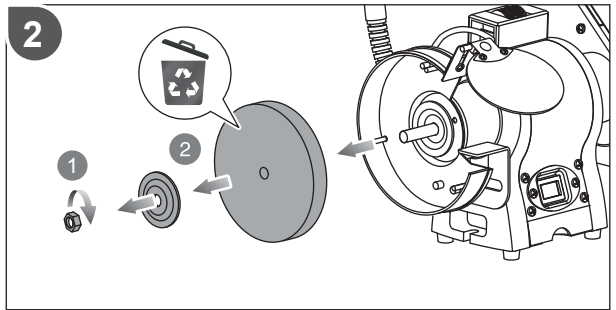
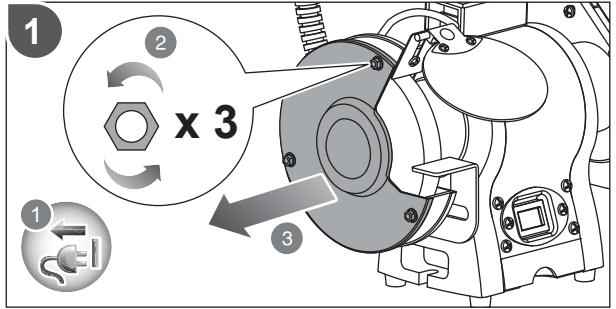
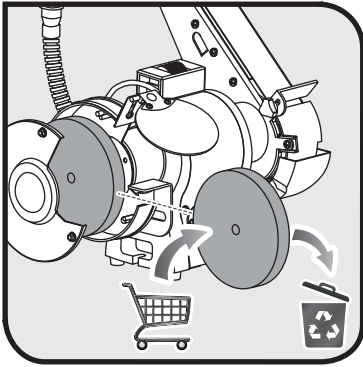
8

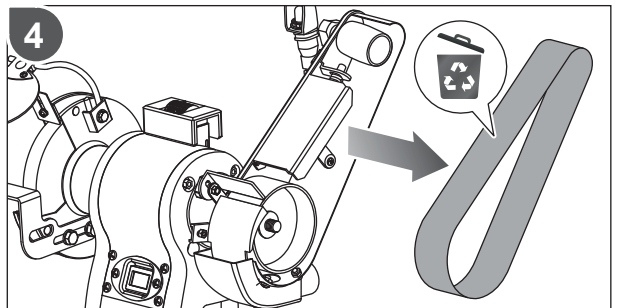
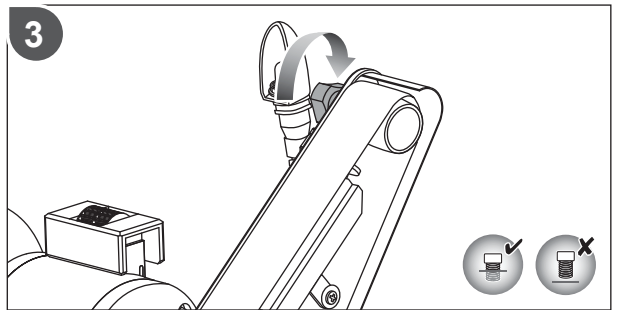
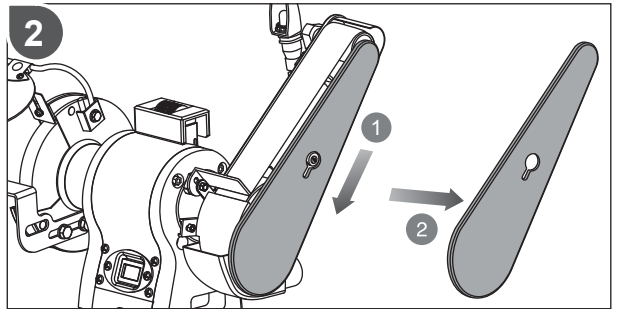
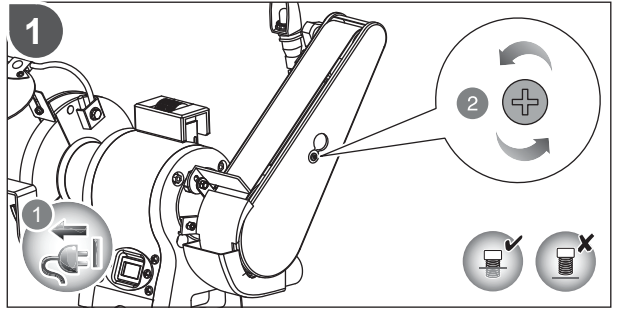
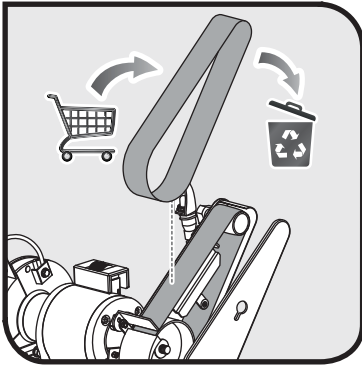


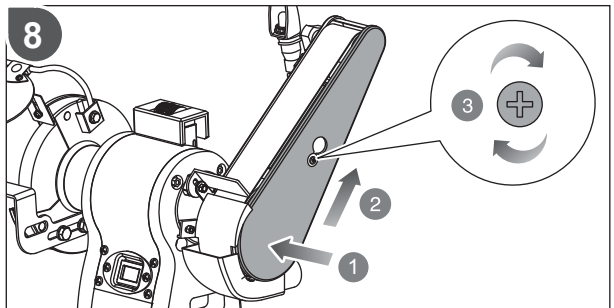
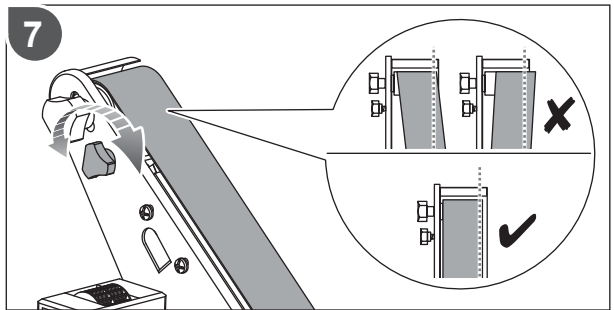
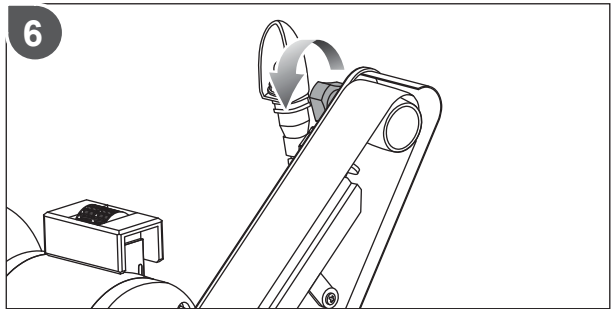
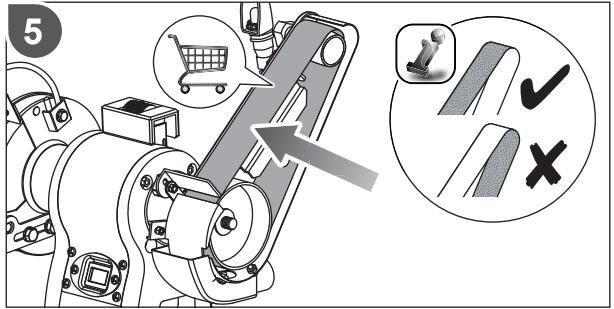


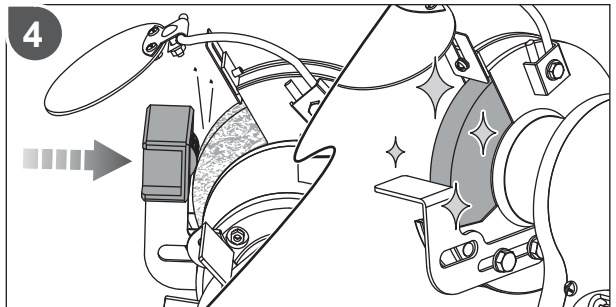
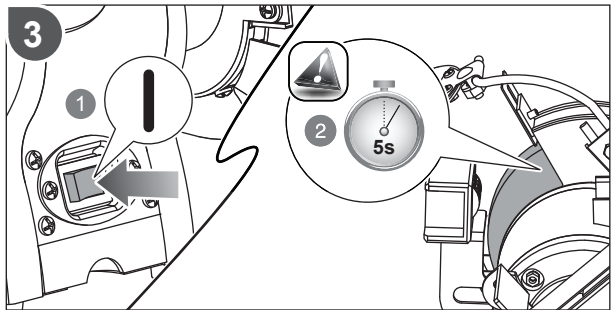
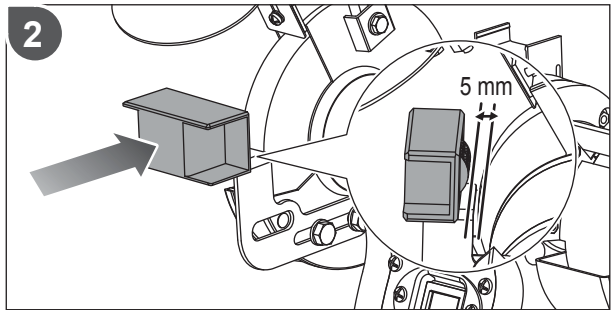
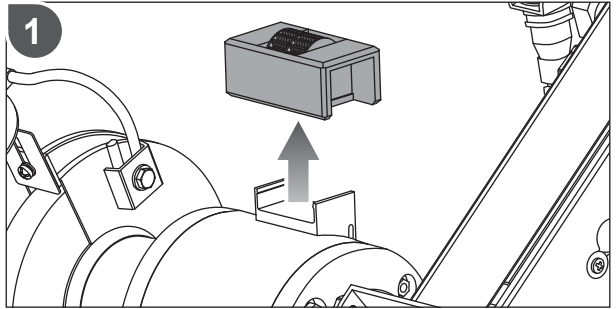
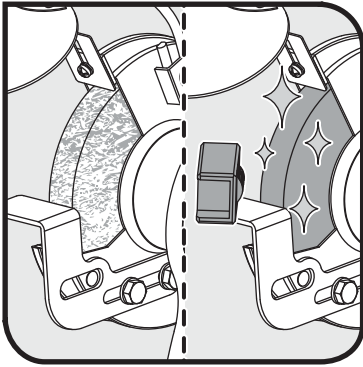


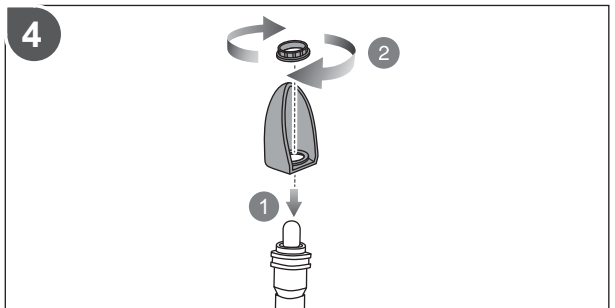
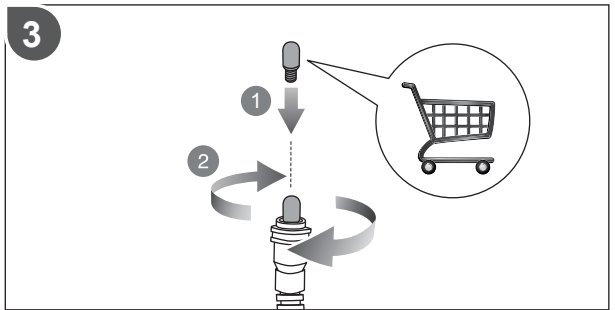
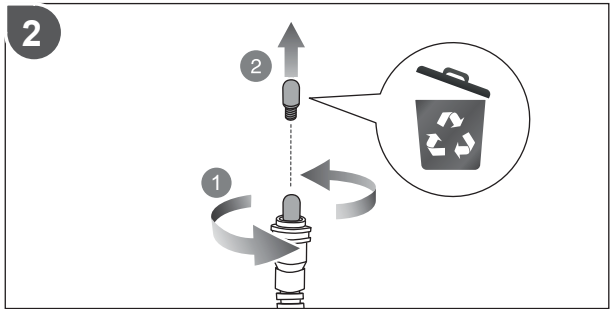
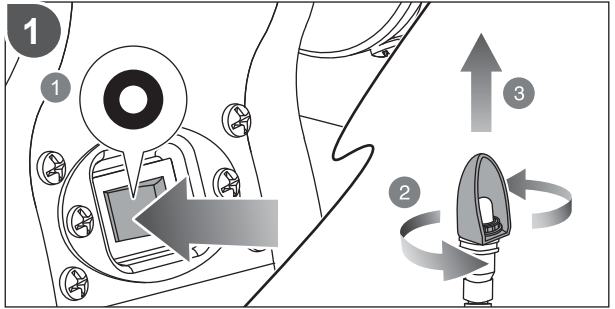
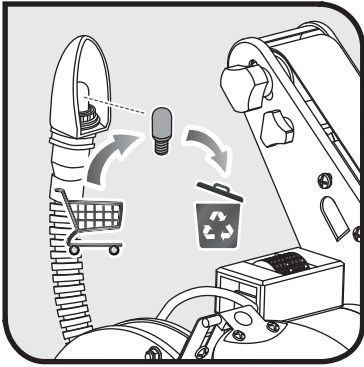












PRODUCT SPECIFICATIONS

Motor type	Induction
Motor ratings	230V - 240V ~ 50 Hz
Rated power	370 W
Wheel diameter	150 mm
Wheel width	20 mm
Bore diameter	12.7 mm
Belt size	50 x 686 mm
No-load speed	2,850 RPM
Wheel grits	36 (Coarse)
Net weight	10.3 Kg

